



Keel Light, 922/LMB-OUT  
poltrona lounge \ lounge armchair

La famiglia Keel Light composta da sedia e poltroncina dining, poltrona e sgabelli a due altezze, nasce da una ricerca sul tema del rapporto tra rigore geometrico e sinuosità organica. Keel Light, ampliamento della collezione Keel, si differenzia per il suo guscio sotto sedile verniciato che rimanda al mondo della nautica, rappresentando infatti il tentativo di trovare il miglior equilibrio tra una struttura lineare in tondino di metallo ed elementi d'appoggio in massello di iroko dalle forme morbide e sinuose che presentano una lavorazione molto particolare.

The Keel Light family, consisting of dining chair and armchair, lounge chair and two-height stools, was born from the research of the relationship between geometric rigor and organic sinuosity. Keel Light, an extension of the Keel collection, differs from it for its painted underlying shell that refers to the nautical world, representing the attempt to find the best balance between a linear structure in metal rod and supporting elements in solid iroko wood with soft and sinuous shapes that present a very special process.

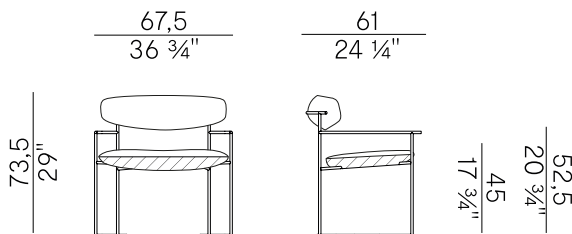
## Informazioni tecniche \ Technical information

### Descrizione tecnica \ Technical description

Poltrona lounge con struttura in tondino d'acciaio verniciato a polveri epossidiche per outdoor nelle finiture antracite o Aval. Schienale in massello di iroko. Seduta imbottita con guscio sottostante rigido verniciato acrilico per esterno, nello stesso colore e goffatura fine del fusto. Rivestimenti di collezione.

Lounge armchair with structure in embossed metal rod painted with epoxy powders in anthracite or Aval finishes. Backrest in solid iroko wood. Padded seat with rigid underlying shell, acrylic painted for outdoors, in the same color and fine embossing of the structure. Coverings as per collection.

### Dimensioni \ Dimensions



### Consumi stoffe \ Fabric requirements

| FABRIC REQUIREMENTS   |              |         |         |
|---|--------------|---------|---------|
|   |              | x1      | x2      |
|  | <b>H 140</b> | ml 0,95 | ml 1,90 |

| FABRIC REQUIREMENTS   |                  |         |         |
|---|------------------|---------|---------|
|   |                  | x1      | x2      |
|  | <b>H 55 1/4"</b> | yd 1,24 | yd 2,48 |



### PACKAGING

1 x box = m<sup>3</sup> 0.35  
gross weight - Kg 16

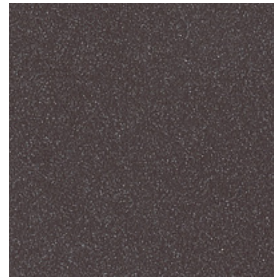
## Finiture \ Finishes

Finiture struttura \  
Frame finishes

Metallo verniciato \ Lacquered metal  



Antracite gofrato \  
Anthracite embossed



Aval gofrato \  
Aval embossed

Finiture schienale \  
Backrest finishes

Iroko \ Iroko  



EU  
Iroko\  
Iroko

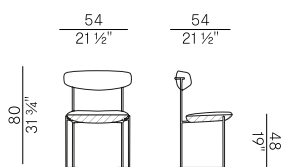
Rivestimenti \  
Coverings

Tessuto outdoor \ Outdoor fabric

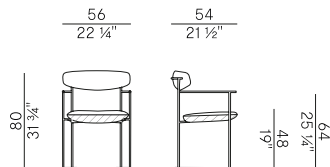
Collezione outdoor Keel Light \ Keel Light outdoor collection

Collezione costituita da sedia e poltroncina dining, poltrona lounge e sgabelli a due altezze. Struttura in tondino di acciaio verniciato antracite o Aval goffrato. Schienale in massello di frassino e seduta imbottita in poliuretano espanso ignifugo con guscio sottostante rigido verniciato, nello stesso colore e goffratura fine del fusto. Finiture e rivestimenti di collezione.

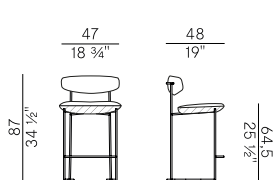
Collection consisting of dining chair and dining armchair, lounge armchair and two height stools. Structure in anthracite or Aval embossed painted steel rod. Backrest in solid ash wood and seat padded in fire retardant polyurethane foam with rigid underlying shell painted in the same color and fine embossing of the structure. Materials and coverings as per collection.



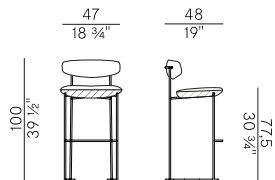
922/MB-OUT  
sedia dining \ dining chair



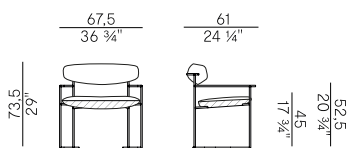
922/PMB-OUT  
poltroncina dining \ dining armchair



922/SMB-OUT  
sgabello basso \ counter stool



922/AMB-OUT  
sgabello alto \ barstool



922/LMB-OUT  
poltrona lounge \ lounge armchair